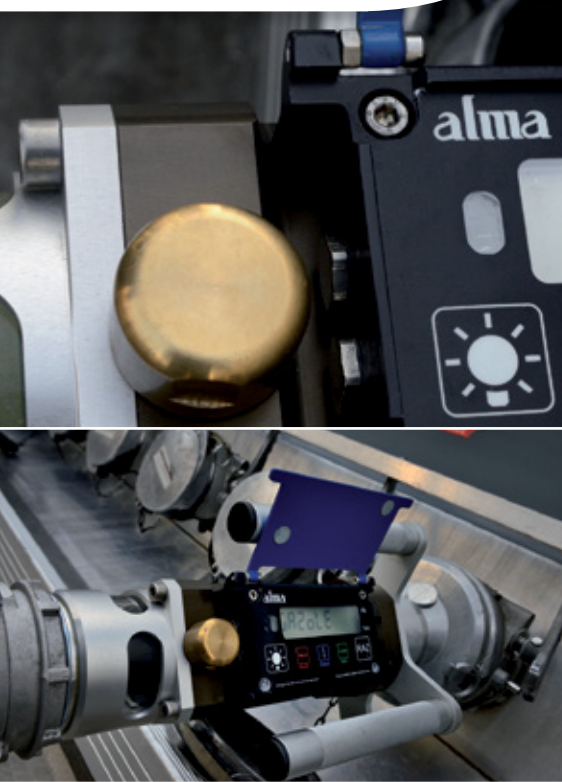


Portable gravity flow meter  
for petroleum products



Flexicompt+

## Application

Dedicated to gravity measurement of petroleum products

- Product metering during delivery operations to gas stations
- Tank truck, rail car product reception control
- Reduce the risk of fraud
- Partial or full compartment deliveries
- Stationary position also available



## Product certification



Material in conformity with  
Measuring Instruments  
Directive 2004/22/EC



ISO 9001 : 2008



ATEX conformity  
Zone 1 Gas group B



European certifications in  
accordance with directives  
concerning measuring  
instruments and equipment  
installed in explosive area

## Constitution

- 3" ADRIANE Turbine High-accuracy
- UNI electronic calculator Gas detector  
Temperature compensation
- Adaptable input/output connections

## Product benefits

- Quick & easy to use
- Mobile & autonomous
- Lightweight & compact
- Multi-products
- Low pressure drop
- No product retention
- Easy maintenance
- Data transfer to PC/smartphone (CTD+ Key)
- Available in French & English



# FLEXICOMPT+

## Key features

FLEXICOMPT is a **portable and compact MID certified** metering system which enables precise measuring of quantities delivered to your site.

With the help of the advanced technology of our **ADRIANE turbine**, the volume delivered to each of your gas stations can be quickly and easily checked. It makes split deliveries possible as well as enabling transparent returned product quantification for **all types of fuel**.

Most importantly, the FLEXICOMPT **shows any discrepancies** between the actual amount delivered and the amount invoiced, meaning a rapid return on investment.

The FLEXICOMPT comes with an infra-red data transfer system, with printer kit and protective carry case as an option.

Flexicompt+	
<b>Metered liquids:</b>	All refined petroleum products ( <i>Heating oil, diesel, fuel, jet, red diesel, ethanol etc.</i> )
<b>Flow rate:</b>	8 to 80 m <sup>3</sup> /h 133 to 1330 l/min
<b>Accuracy class:</b>	0,5
<b>Accuracy:</b>	+/- 0,1%*
<b>Repeatability:</b>	+/- 0,02%
<b>Scale interval:</b>	1L
<b>Min. pressure:</b>	Atmospheric pressure
<b>Max. pressure:</b>	5 bars
<b>Temperature:</b>	-20°C to +50°C
<b>Pressure drop:</b>	0,05 bar to 40 m <sup>3</sup> /h
<b>Weight:</b>	6 kg
<b>Detection:</b>	2 gas detectors 1 temperature probe
<b>Certificate:</b>	<b>CET LNE-25756 (MID)</b>

\* depending on the conditions of use

Turbine	
<b>Body:</b>	Aluminum 242
<b>Size:</b>	3" DN80 100x100mm
<b>Atex:</b>	II 2 G c IIC T6
<b>Viscosity:</b>	13 mm <sup>2</sup> /s max.

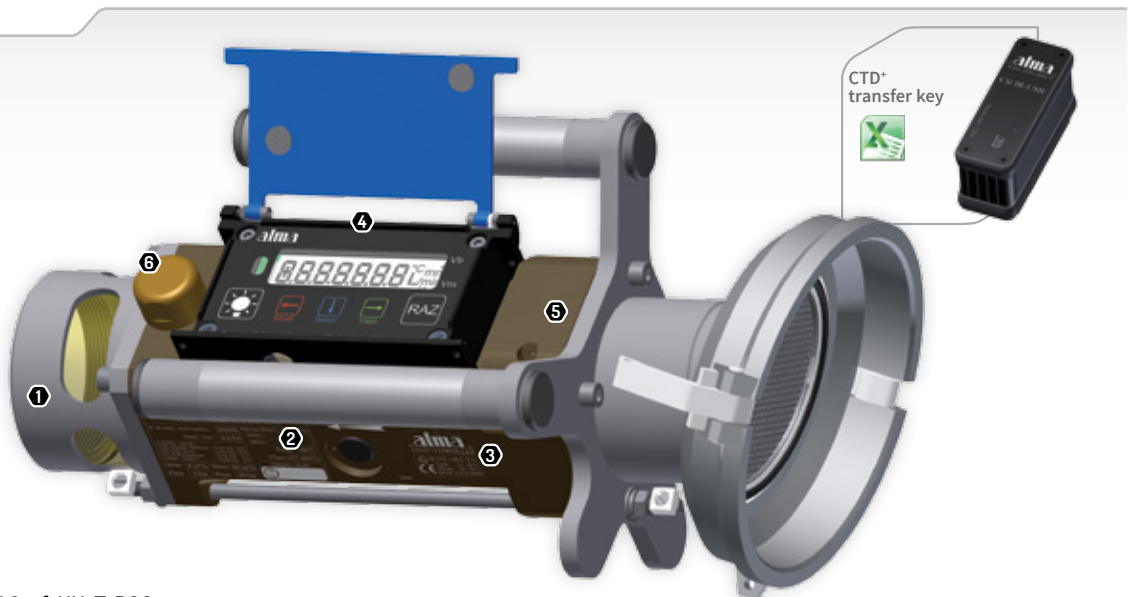
Calculator	
<b>LCD screen:</b>	- Easy reading & simple navigation menu - Alarm messages integrated - Units L, m <sup>3</sup> /h, L/min, °C - French or English language
<b>Power supply:</b>	2 lithium batteries (lifetime: 2 years)
<b>Atex:</b>	II 1 G Ex ia IIB T4 Ga
<b>Memory:</b>	1 year with 99 messages/day

Options	
<b>CTD+ key:</b>	Data transfer of operations log & parameters to a computer or smartphone (Excel format)
<b>Temperature conversion:</b>	15°C or 20°C

Accessories	
<b>Inlet/outlet connections:</b>	- 4" API - 3" 1/2 symmetric - Camlock - Other on request

## FLEXICOMPT+

- 1 Sight glass
- 2 Temperature probe
- 3 ADRIANE turbine
- 4 UNI indicator calculator
- 5 Gas detectors
- 6 Vacuum breaker



<https://www.youtube.com/watch?v=fsUHoTaD8Gg>

alma-carbovac.com



Head Office: 4A, boulevard de la Gare, porte 1, F-94470 Boissy Saint Léger Ph. : +33 1 45 69 44 70 Fax: +33 1 45 69 16 02 Email : info@alma.tm.fr